

Model Number

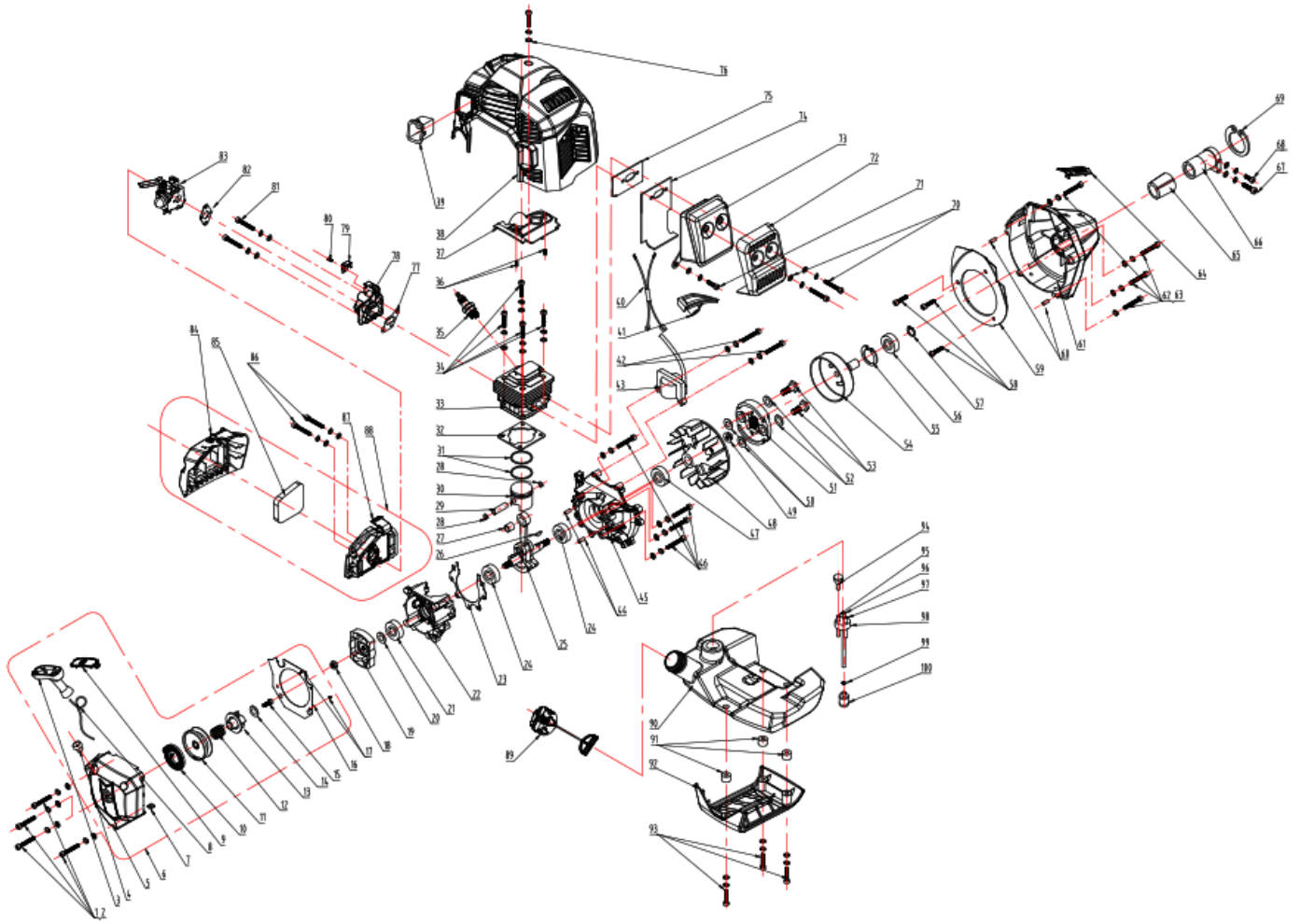
Mac Allister MBCP32-2



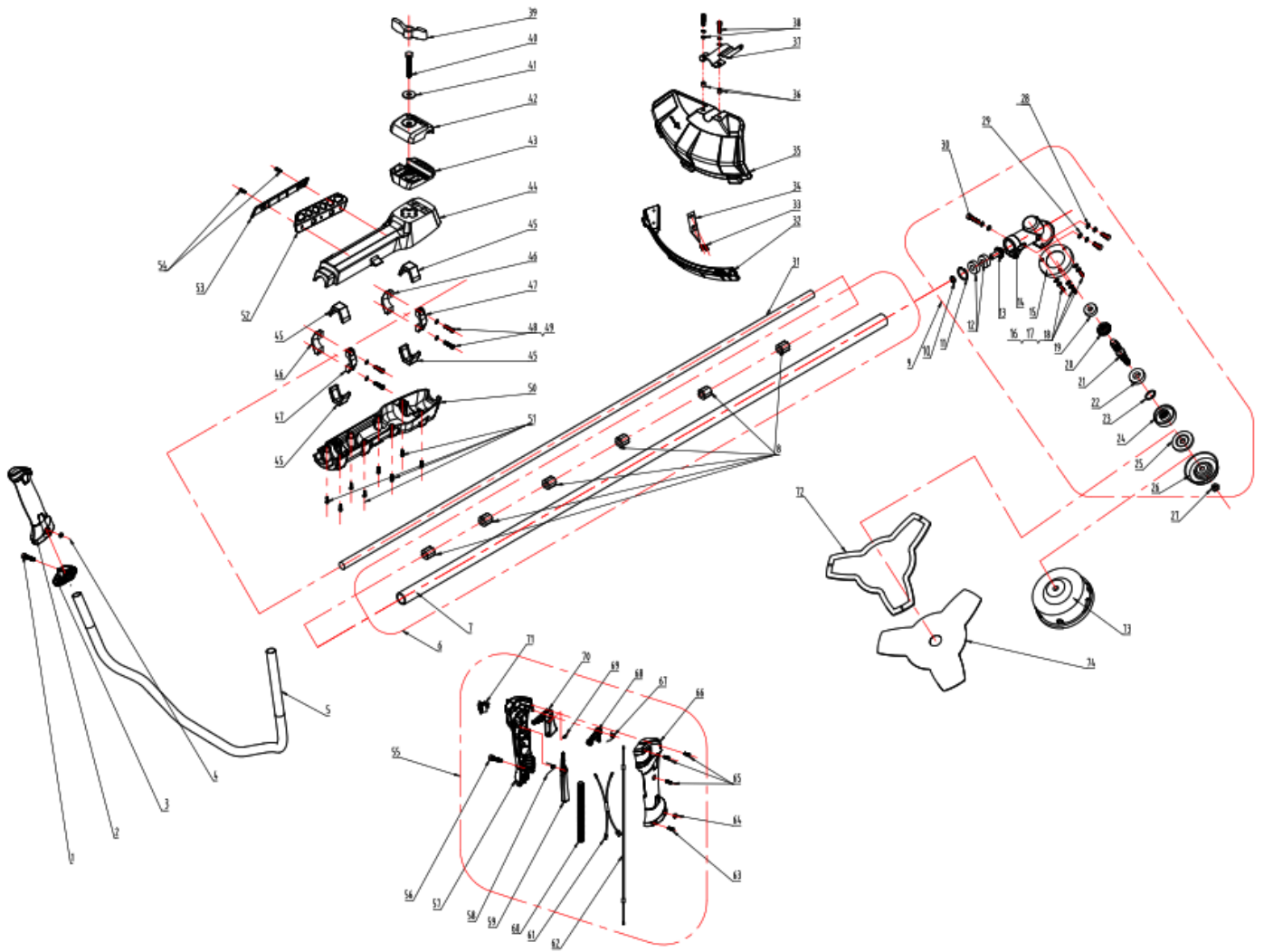
32cc Brush Cutter

Parts Manual

Exploded Diagram 1 – Engine Components



Exploded Diagram 2 – Shaft/Body Components



Parts List

| Part ID | Apelson PN | MPN | Part Description | Qty |
|-------------------------------|--------------|---------------------|------------------------|-----|
| Diagram 1 - Engine Components | | | | |
| 1 | 20061119 | GB/T2671.2 | SCREW M5X20 | 2 |
| 2 | 20061119 | GB/T2671.2 | SCREW M5X25 | 2 |
| 3 | GP0000002992 | GB/T93 | LOCK WASHER 5 | 4 |
| 4 | GP0000002993 | GB/T97.1 | PLATE WASHER 5 | 4 |
| 5 | GP0000003586 | TBC443D.1.3-2 | START GRIP | 1 |
| 6 | GP0000003587 | YD25.02.01-2 | EYELET | 1 |
| 7 | GP0000003588 | TBC433D.1.3-1 | START HOUSING | 1 |
| 8 | GP0000003589 | TBC433D.1.3 | START ASSEMBLY | 1 |
| 9 | GP0000003590 | GB 39 | NUT M5 | 1 |
| 10 | GP0000003591 | TBC430D.01.12.00-2 | START ROPE | 1 |
| 11 | GP0000003592 | TBC443D.1.3-3 | START GRIP COVER | 1 |
| 12 | GP0000003593 | TBC430D.01.12.00-4 | COIL SPRING | 1 |
| 13 | GP0000003594 | TBC431D.01.12.00-3 | START PULLEY | 1 |
| 14 | GP0000003595 | TBC430D.01.12.00-5 | SPRING. START | 1 |
| 15 | GP0000003596 | TBC431D.01.12.00-6 | RATCHET WHEEL | 1 |
| 16 | GP0000003597 | GB/T9074.19 | ST SCREW 4.8X19 | 1 |
| 17 | GP0000003597 | GB/T9074.19 | PLATE WASHER 5X16X1 | 1 |
| 18 | GP0000003599 | TBC443D.1-1 | STARTER GASKET | 1 |
| 19 | GP0000003600 | TBC430D.01.00.02-00 | START REEL | 1 |
| 20 | GP0000002993 | GB/T97.1 | FLAT WASHER 8 | 1 |
| 21 | GP0000003028 | YD38-3.01.01.02-00 | OIL-SEAL 12X22X7 | 1 |
| 22 | GP0000003601 | TBC330D.01.01.00-2 | CRANK CASE RH SIDE | 1 |
| 23 | GP0000003602 | TBC330D.01.01.00-3 | GASKET \ CRANK CASE | 1 |
| 24 | GP0000003014 | GB/T276 | BALL BEARING 6201 | 2 |
| 25 | GP0000003603 | TBC330D.01.03.01-00 | CRANK SHAFT ASS'Y | 1 |
| 26 | 20061664 | GB/T1099 | KEY 3X5X13 | 1 |
| 27 | GP0000003604 | TBC330D.01.03.03-00 | BEARING | 1 |
| 28 | GP0000003605 | TBC330D.01.03.00-3 | CIRCLIP \ PISTON PIN | 2 |
| 29 | GP0000003606 | TBC330D.01.03.00-2 | PISTON PIN | 1 |
| 30 | GP0000003607 | TBC330D.01.03.02-00 | PISTON | 1 |
| 31 | GP0000003608 | TBC330D.01.03.00-1 | PISTON RING | 2 |
| 32 | GP0000003609 | TBC330D.01.00.00-2 | GASKET \ CYLINDER | 1 |
| 33 | GP0000003610 | TBC331D.01.00.00-1 | CYLINDER | 1 |
| 34 | 20061119 | GB/T2671.2 | SCREW M5X20 \ CYLINDER | 4 |
| 35 | GP0000002992 | GB/T93 | LOCK WASHER 5 | 4 |
| 36 | GP0000002993 | GB/T97.1 | PLATE WASHER 5 | 4 |
| 37 | GP0000003611 | YD45.01.11.04-00 | SPARK PLUG | 1 |
| 38 | GP0000003612 | GB6564 | ST SCREW 4X10 | 2 |
| 40 | GP0000003614 | TBC433D.1.5.1 | TOP HOUSING | 1 |
| 42 | GP0000003616 | TBC330D.01.11.02-00 | WIRE | 1 |
| 43 | GP0000003588 | TBC433D.1.3-1 | SPARK PLUG COVER | 1 |
| 44 | 20061119 | GB/T2671.2 | SCREW M5X25. IGNITION | 2 |
| 45 | GP0000002992 | GB/T93 | LOCK WASHER 5 | 2 |
| 46 | GP0000002993 | GB/T97.1 | PLATE WASHER 5 | 2 |
| 47 | GP0000003618 | TBC330D.01.11.01-00 | IGNITION | 1 |

| | | | | |
|-----|-------------|----------------------|--------------------------|---|
| 48 | GP000002894 | GB/T119.2 | PIN 5MM×10 | 2 |
| 49 | GP000003619 | TBC330D.01.01.00-1 | CRANK CASE LH SIDE | 1 |
| 50 | 20061119 | GB/T2671.2 | SCREW M5X30 \ CRANK CASE | 4 |
| 51 | GP000002992 | GB/T93 | LOCK WASHER 5 | 4 |
| 52 | GP000002993 | GB/T97.1 | PLATE WASHER 5 | 4 |
| 53 | GP000003028 | YD38-3.01.01.02-00 | OIL-SEAL 12X22X7 | 1 |
| 54 | GP000003620 | TBC430D.01.10.00-00 | MAGNETO ROTOR | 1 |
| 55 | GP000003621 | GB/T6187 | FLANGE NUT M8 | 1 |
| 56 | GP000003622 | TBC430D.01.00.00-9 | FLAT WASHER 8X16X1.5 | 2 |
| 57 | GP000003623 | TBC430D.01.00.04-00 | CLUTCH ASSEMBLY | 1 |
| 58 | GP000003624 | GB/T755 | WASHER 10 | 2 |
| 59 | GP000003625 | TBC430D.01.00.00-8 | BOLT \ CLUTCH | 2 |
| 60 | GP000003626 | TBC430D.01.14.01-00 | CLUTCH DRUM | 1 |
| 61 | GP000003018 | GB/T893.1 | CIRCLIP 35 | 1 |
| 62 | GP000003014 | GB/T276 | BALL BEARING 6202-2Z | 1 |
| 63 | GP000003627 | GB/T894.1 | CIRCLIP 15 | 1 |
| 64 | GP000002941 | GB/T2672 | SCREW M5X16 | 3 |
| 66 | GP000002894 | GB/T119.2 | PIN 5MM×10 | 2 |
| 67 | GP000003629 | TBC433D.1.5-1 | CLUTCH DRUM HOUSING | 1 |
| 68 | 20061119 | GB/T2671.2 | SCREW M5X25 | 2 |
| 69 | 20061119 | GB/T2671.2 | SCREW M5X25 | 2 |
| 70 | GP000002992 | GB/T93 | LOCK WASHER 5 | 4 |
| 71 | GP000002993 | GB/T97.1 | PLATE WASHER 5 | 4 |
| 75 | 20061119 | GB/T2671.2 | SCREW M6X25. MUFFLER | 1 |
| 76 | GP000002992 | GB/T93 | LOCK WASHER 6 | 1 |
| 77 | GP000002993 | GB/T97.1 | PLATE WASHER 6 | 1 |
| 78 | 20061119 | GB/T2671.2 | SCREW M5X12 . MUFFLER | 1 |
| 79 | GP000002992 | GB/T93 | LOCK WASHER 5 | 1 |
| 80 | GP000002993 | GB/T97.1 | PLATE WASHER 5 | 1 |
| 81 | GP000003018 | GB/T893.1 | CIRCLIP 45 | 1 |
| 82 | 20061119 | GB/T2671.2 | SCREW M5X60. MUFFLER | 2 |
| 83 | GP000002992 | GB/T93 | LOCK WASHER 5 | 2 |
| 84 | GP000002993 | GB/T97.1 | PLATE WASHER 5 | 2 |
| 85 | 20061119 | GB/T2671.2 | SCREW M5X12. MUFFLER | 1 |
| 86 | GP000002992 | GB/T93 | LOCK WASHER 5 | 1 |
| 87 | GP000002993 | GB/T97.1 | PLATE WASHER 5 | 1 |
| 88 | GP000003633 | TBC330D.01.00.00-7 | MUFFLER COVER | 1 |
| 89 | GP000003634 | TBC333DJ.01.09.00-00 | MUFFLER | 1 |
| 90 | GP000003635 | TBC331D.01.00.00-10 | GASKET. MUFFLER | 1 |
| 91 | GP000003636 | TBC330D.01.00.00-5 | GASKET. MUFFLER | 1 |
| 92 | 20061119 | GB/T2671.2 | SCREW M5X16 | 1 |
| 93 | GP000002992 | GB/T93 | LOCK WASHER 5 | 1 |
| 94 | GP000002993 | GB/T97.1 | PLATE WASHER 5 | 1 |
| 95 | GP000003637 | TBC330D.01.00.00-3 | GASKET | 1 |
| 96 | GP000003638 | TBC331D.01.00.01-00 | ADMITTING PIPE | 1 |
| 97 | GP000003639 | TBC431D.01.00.00-12 | STAMPING | 1 |
| 98 | 20055742 | GB/T845 | ST SCREW 3.5X9.5 | 1 |
| 99 | 20061119 | GB/T2671.2 | SCREW M5X22 | 2 |
| 100 | GP000002992 | GB/T93 | LOCK WASHER 5 | 2 |

| | | | | |
|-----------------------------------|--------------|---------------------|--------------------------|---|
| 101 | GP0000002993 | GB/T97.1 | PLATE WASHER 5 | 2 |
| 102 | GP0000003640 | TBC331D.01.00.00-4 | GASKET. CARBURETOR | 1 |
| 103 | GP0000003641 | TBC331D.01.06.00-00 | CARBURETOR | 1 |
| 104 | GP0000003642 | TBC433D.1.2-2 | AIR BOX COVER | 1 |
| 105 | GP0000003643 | TBC443D.1.2-3 | SPONE | 1 |
| 106 | 20061119 | GB/T2671.2 | SCREW M5X45 | 2 |
| 107 | GP0000002992 | GB/T93 | LOCK WASHER 5 | 2 |
| 108 | GP0000002993 | GB/T97.1 | PLATE WASHER 5 | 2 |
| 109 | GP0000003644 | TBC433D.1.2-1 | AIR BOX BASE | 1 |
| 110 | GP0000003645 | TBC433D.1.2 | AIR BOX ASSEMBLY | 1 |
| 111 | GP0000003646 | GJB25DM.03.01-00 | FUEL TANK COVER | 1 |
| 112 | GP0000003647 | TBC433D.1.6-1 | FUEL TANK ASS'Y | 1 |
| 113 | GP0000003648 | TBC431D.01.13.00-2 | RUBBER BUMP | 3 |
| 115 | 20061119 | GB/T2671.2 | SCREW M5X25 FUEL TANK | 4 |
| 116 | GP0000002992 | GB/T93 | LOCK WASHER 5 | 4 |
| 117 | GP0000002993 | GB/T97.1 | PLATE WASHER 5 | 4 |
| 118 | GP0000003650 | TBC430D.01.13.00-4 | FUEL TUBE | 1 |
| 119 | GP0000003651 | TBC430D.01.13.00-5 | RETURN TUBE | 1 |
| 120 | GP0000003652 | TBC431D.01.13.00-3 | RETAINER. FUEL TUBE | 1 |
| 122 | GP0000003654 | YD38-3.03.04-00 | FILTER FUEL | 1 |
| Diagram 2 - Shaft/Body Components | | | | |
| 1 | 20061119 | GB/T2671.2 | SCREW M5X45 | 1 |
| 2 | GP0000003655 | TBC243D.05.02-1 | LEFT HANDLE | 1 |
| 3 | GP0000003656 | TBC243D.05.02-2 | LEFT HANDLE CLAMP | 1 |
| 4 | GP0000003657 | GB/T6170 | NUT M5 | 1 |
| 5 | GP0000003658 | TBC243D.05.00-1 | AL TUBING | 1 |
| 6 | GP0000003659 | TBC443D.03.01-00 | STRAIGHT SHAFT ASSEMBLY | 1 |
| 7 | GP0000003660 | TBC443D.03.01-1 | AL TUBING | 1 |
| 8 | GP0000003661 | TBC431D.03.04-00 | RUBBER | 6 |
| 9 | GP0000003662 | TBC431D.04.00-00 | GEAR BOX ASSEMBLY | 1 |
| 10 | GP0000003627 | GB/T894.1 | CIRCLIP 10 | 1 |
| 11 | GP0000003018 | GB/T893.1 | CIRCLIP 26 | 1 |
| 12 | GP0000003014 | GB/T276 | BALL BEARING 6000-2Z | 2 |
| 13 | GP0000003664 | TBC431D.04.00-2 | PINION | 1 |
| 14 | GP0000003665 | TBC431D.04.00-1 | GEAR BOX | 1 |
| 15 | GP0000003666 | TBC431D.04.00-7 | TOP GUARD | 1 |
| 16 | 20061119 | GB/T2671.2 | SCREW M5X8 | 3 |
| 17 | GP0000002992 | GB/T93 | LOCK WASHER 5 | 3 |
| 18 | GP0000002993 | GB/T97.1 | PLATE WASHER 5 | 3 |
| 19 | GP0000003014 | GB/T276 | BEARING 6000-2Z 10X26X8 | 1 |
| 20 | GP0000003667 | TBC431D.04.00-4 | GEAR | 1 |
| 21 | GP0000003668 | TBC431D.04.00-3 | GEAR SHAFT | 1 |
| 22 | GP0000003014 | GB/T276 | BALL BEARING 6002-2Z | 1 |
| 23 | GP0000003018 | GB/T893.1 | CIRCLIP 26 | 1 |
| 24 | GP0000003669 | TBC431D.04.00-6 | BLADE RETAINER | 1 |
| 25 | GP0000003670 | TBC431D.04.00-5 | CAP WASHER | 1 |
| 26 | GP0000003671 | TBC431D.04.00-8 | BOTTOM GUARD | 1 |
| 27 | GP0000003033 | GB/T6177.2 | FLANGE NUT M10X1.25 LEFT | 1 |
| 28 | 20061119 | GB/T2671.2 | SCREW M6X12 | 1 |

| | | | | |
|----|-------------|--------------------|-------------------------|---|
| 29 | GP000002992 | GB/T93 | LOCK WASHER 6 | 1 |
| 30 | GP000002993 | GB/T97.1 | PLATE WASHER 6 | 1 |
| 31 | 20061119 | GB/T2671.2 | SCREW M6X12 | 1 |
| 32 | GP000002992 | GB/T93 | LOCK WASHER 6 | 1 |
| 33 | GP000002993 | GB/T97.1 | PLATE WASHER 6 | 1 |
| 34 | 20061119 | GB/T2671.2 | SCREW M6X25 | 1 |
| 35 | GP000002992 | GB/T93 | LOCK WASHER 6 | 1 |
| 36 | GP000002993 | GB/T97.1 | PLATE WASHER 6 | 1 |
| 37 | GP000003672 | TBC430D.03.00-1 | DRIVER SHAFT | 1 |
| 39 | 20055742 | GB/T845 | ST SCREW 4.8X13 | 2 |
| 40 | GP000003674 | TBC431D.06.00-2 | CUTTING BLADE | 1 |
| 41 | GP000003675 | TBC431D.06.02-00 | GUARD | 1 |
| 42 | GP000003676 | TBC430D.06.00-1 | CLAMP \ GUARD | 1 |
| 43 | 20061119 | GB/T2671.2 | SCREW M6X20 | 2 |
| 44 | GP000002992 | GB/T93 | LOCK WASHER 6 | 2 |
| 45 | GP000002993 | GB/T97.1 | PLATE WASHER 6 | 2 |
| 49 | GP000003679 | SBC645KD.07.00-01 | UPPER CLAMP | 1 |
| 50 | GP000003680 | SBC645KD.07.00-02 | LOWER CLAMP | 1 |
| 55 | 20061119 | GB/T2671.2 | SCREW M5X14 | 2 |
| 56 | GP000002992 | GB/T93 | LOCK WASHER 5 | 2 |
| 58 | 20055742 | GB/T845 | ST SCREW 4.8X25 | 8 |
| 60 | GP000003687 | TBC443D.2-4 | ST SCREW 4.8X16 | 2 |
| 61 | 20055742 | GB/T845 | ST SCREW 4.8X25 | |
| 62 | GP000003688 | TBC243D.05.01-00 | CONTROL HANDLE ASSEMBLY | 1 |
| 63 | 20061119 | GB/T2671.2 | SCREW M5X35 | 1 |
| 64 | GP000002993 | GB/T97.1 | PLATE WASHER 5 | 1 |
| 65 | GP000003689 | TBC243D.05.01-2 | PLASTIC HANDLE \ LH | 1 |
| 66 | GP000003690 | TBC243D.05.01-7 | SPRING \ TRIGGER | 1 |
| 67 | GP000003691 | TBC243D.05.01-6 | LOCK TRIGGER | 1 |
| 68 | GP000003692 | TBC243D.05.01-8 | WIRE TUBE | 1 |
| 69 | GP000003693 | TBC243D.05.06-00 | WIRE CABLE A | 1 |
| | GP000003694 | TBC243D.05.07-00 | WIRE CABLE B | 1 |
| 70 | GP000003695 | TBC243D.05.05-00 | THROTTL CABLE ASSEMBLY | 1 |
| 71 | 20055742 | GB/T845 | ST SCREW 3.5X9.5 | 1 |
| 72 | GP000003657 | GB/T6170 | NUT M5 | 1 |
| 73 | 20055742 | GB/T845 | ST SCREW 4.2X10 | 3 |
| 74 | GP000003697 | TBC243D.05.01-1 | PLASTIC HANDLE \ RH | 1 |
| 75 | GP000003698 | TBC243D.05.01-5 | SPRING \ TRIGGER | 1 |
| 78 | GP000003701 | TBC243D.05.01-3 | TRIGGER | 1 |
| 79 | GP000002973 | YD38-3.01.11.04-00 | SWITCH | 1 |
| 80 | GP000003702 | TBC431D.02.00-5 | BLADE COVER | 1 |
| 81 | GP000003703 | TBC430D.02.01-00 | STRING HEAD ASSEMBLY | 1 |
| 82 | GP000003704 | TBC430D.02.00-1 | BLADE | 1 |